



KDM CORPORATION INC.

Wheel Hub & Bearing Unit

Bus

Truck

Trailer



KDM CORPORATION INC.

A 718 , BONANZA SAHAR PLAZA COMPLEX ,
SIR M.V ROAD NEAR JB NAGAR METRO STATION
ANDHERI EAST MUMBAI 400059 INDIA.

A 80001

KDM



TRUCK AXLE MODULE

Cross Reference Number

FAG	801974AE.H195
SKF	VKBA 5377/BTF 0110/BTF 0021D
TIMKEN	-----
FERSA	F300005
OTHER	201012/F80197403TR2T/ F80197410TR2T

OEM Number

42541578/5006207845/81934200288/
81934200330/ 81934200349/1934200288

Position

Front axle

d	D	T	Weight/Kg.
70	196	139.5	13.2

BRAND	BUS	TRUCK	TRAILER
EVICO	CITYCLASS		
	EUROPOLIS		
MAN	LIONS COACH	TGA	
	LIONS CITY	TGM	
	LIONS STAR	TGS	
	HOCL	TGX	
	NG	F 2000	
	NL	E 2000	
	NU	M 2000	
	NM		
	UN		
	RH		
	SG		
	SL		
	SU		
TOURLINER			
UL			

Note :- Our Bearings are interchangeable with the O.E.M. All original equipment manufacture's name, number symbols and description used in this page for reference purpose only

A 80008

KDM



TRUCK AXLE MODULE

Cross Reference Number

FAG	801974AE.H195
SKF	VKBA 5377/BTF 0110/BTF 0021D
TIMKEN	-----
FERSA	F300005
OTHER	201012/F80197403TR2T/ F80197410TR2T

OEM Number

42541578/5006207845/81934200288/
81934200330/ 81934200349/1934200288

Position

Front axle

d	D	T	Weight/Kg.
70	196	140	12.5

BRAND	BUS	TRUCK	TRAILER
EVICO	CITYCLASS		
	EUROPOLIS		
MAN	LIONS COACH	TGA	
	LIONS CITY	TGM	
	LIONS STAR	TGS	
	HOCL	TGX	
	NG	F 2000	
	NL	E 2000	
	NU	M 2000	
	NM		
	UN		
	RH		
	SG		
	SL		
SU			
	TOURLINER		
	UL		

Note :- Our Bearings are interchangeable with the O.E.M. All original equipment manufacture's name, number symbols and description used in this page for reference purpose only

KDM CORPORATION INC.

A 80002

KDM



TRUCK AXLE MODULE

Cross Reference Number

FAG	805531/805532
SKF	VKBA5407, BTF-0068
TIMKEN	-----
FERSA	F300007
OTHER	-----

OEM Number

20550678/5010587029/V20550678/
R5010587029RV

Position

Front axle

d	D	T	Weight/Kg.
60	168	100	9.38

BRAND	BUS	TRUCK	TRAILER
RENAULT		MIDLUM	

Note :- Our Bearings are interchangeable with the O.E.M. All original equipment manufacture's name, number symbols and description used in this page for reference purpose only

A 80003

KDM



TRUCK AXLE MODULE

Cross Reference Number

FAG	564734.H195
SKF	VKBA5549
TIMKEN	SET1334
FERSA	F 300001
OTHER	F56473401TR2TH195/F80540601TR2T/ F809302TR2T

OEM Number

1002689/1003457/100167600/100167601/
3200200151/3434365000/4200200100 /
4 200 2001 01/35287/1003457

Position

Front axle

d	D	T	Weight/Kg.
82	196	113.8	15.30

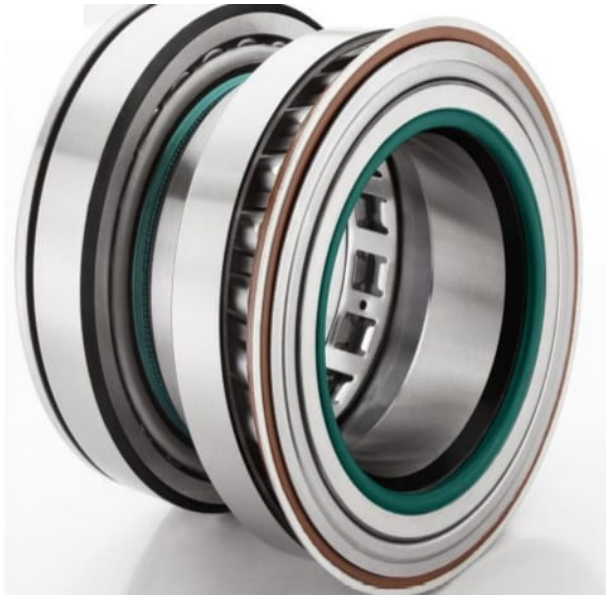
BRAND	BUS	TRUCK	TRAILER
SAF			9019-1122
SCHMITZ CARGOBUL			SKI SPR SCS SKO

Note :- Our Bearings are interchangeable with the O.E.M. All original equipment manufacture's name, number symbols and description used in this page for reference purpose only

KDM CORPORATION INC.

A 90001

KDM



INSERT UNIT

Cross Reference Number

FAG	800792 D
SKF	
TIMKEN	
FERSA	F 200002
OTHER	800792A&C/TT19702/9200,347A

OEM Number

1075408/3988774/20517952/20518661/
20535231/20558966/20792439/20792440 /
20967828/21036050

Position

Rear axle

d	D	T	Weight/Kg.
93.8/94	148	135	6.05

BRAND	BUS	TRUCK	TRAILER
VOLVO	FH12	5000	
	FH16	7000	
	FL6	7500	
	FM10	7700	
	FM12	8300	
	FM7	8700	
	FM9	9700	
	NH12	9900	
	B6R		
	B9S		
	B9TL		

Note :- Our Bearings are interchangeable with the O.E.M. All original equipment manufacture's name, number symbols and description used in this page for reference purpose only

KDM CORPORATION INC.

A 90002

KDM



INSERT UNIT

Cross Reference Number

FAG	581079C
SKF	
TIMKEN	
FERSA	F 200001
OTHER	265229

OEM Number

3988674/3988675/20382168/20518092/20518093/20518637/20558950/20581399/20728008 /20967831

Position

Front Axle

d	D	T	Weight/Kg.
68	125	115	4.90

BRAND	BUS	TRUCK	TRAILER
VOLVO	5000	FH12	
	7000	FH16	
	7500	FM12	
	8300	FM7	
	8700	NH12	
	9700		
	9900		
	B6R		
	B9TL		

Note :- Our Bearings are interchangeable with the O.E.M. All original equipment manufacture's name, number symbols and description used in this page for reference purpose only

A 90003

KDM



INSERT UNIT

Cross Reference Number

FAG	805165A
SKF	
TIMKEN	
FERSA	F200003
OTHER	BK 7700830

OEM Number

20518610/20392010/20518617/20967830
/20589393/20589394

Position

Rear Axle

d	D	T	Weight/Kg.
58	110	115	3.80

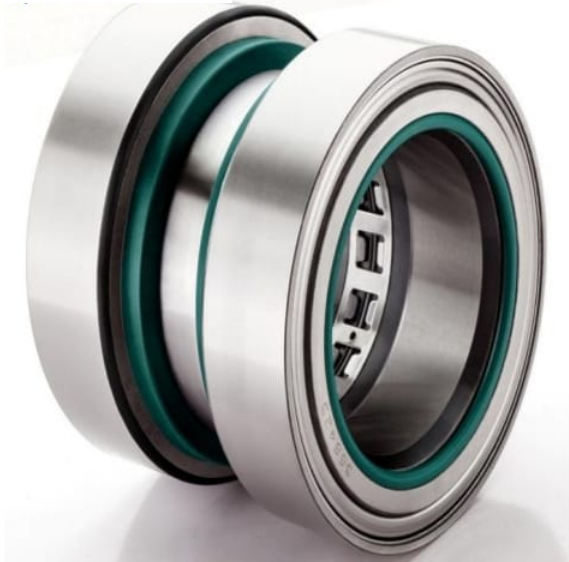
BRAND	BUS	TRUCK	TRAILER
RENAULT		Magnum	
		Premium	
VOLVO		FE	
		FH12	
		FM12	
		FM9	

Note :- Our Bearings are interchangeable with the O.E.M. All original equipment manufacture's name, number symbols and description used in this page for reference purpose only

KDM CORPORATION INC.

AB 90001

KDM



REPAIR INSERT UNIT

Cross Reference Number

FAG	F-566425.H195
SKF	VKBA5423
TIMKEN	SET1314
FERSA	F 200014
OTHER	BK7700828/900.363/ DT296209/35047

OEM Number

1075408/20517952/20518661/20535231/
20558966/20967828/21036050/20792439/
20792440/20792440/3988 774/74 20 792
439/1735191/5001861915/7420516957/7420
535262/7420535264/7420819834/7420819834/7420
819859/7420819860/7421036050/1075408/1078053/20517163/2
0517164/20517950/20518054

Position

Rear axle

d	D	T	Weight/Kg.
94	148	135	5.90

BRAND	BUS	TRUCK	TRAILER
DAF		XF	
RENAULT		Magnum	
		Premium 2	
		Kerax	
VOLVO	B6	FE	
	7700	FH	
	8500	FH12	
	8700	FH16	
	9700	FL6	
	9900	FL7	
		FL10	
		FL12	
		FM	
		FM7	
		FM9,FM12	
		NH12	

Note :- Our Bearings are interchangeable with the O.E.M. All original equipment manufacture's name, number symbols and description used in this page for reference purpose only

AB 90002

KDM



REPAIR INSERT UNIT

Cross Reference Number

FAG	F-566426.H195
SKF	VKBA5425
TIMKEN	SET1312
FERSA	F 200013
OTHER	BK7700831/900.362/DT296208/35078/HDS218

OEM Number

20382168/20518092/20518093/20518637/20518661
 /20558950/20581399/20728008/20967831/2102139
 1/20518637/20967831/2102
 1391/3988673/3988674/3988675/74 20 967
 831/7420518637/74 21 021 391

Position

Rear axle

d	D	T	Weight/Kg.
68/68,2	125	115	4.50

BRAND	BUS	TRUCK	TRAILER
RENAULT		Magnum	
		Premium 2	
		Kerax	
VOLVO		FE	
		FH	
		FH12	
		FH16	
		FM	
		FM7	
		FM9	
	FM12		
	NH12		

Note :- Our Bearings are interchangeable with the O.E.M. All original equipment manufacture's name, number symbols and description used in this page for reference purpose only

AB 90003

KDM



REPAIR INSERT UNIT

Cross Reference Number

FAG	F-566427.H195
SKF	VKBA5424
TIMKEN	SET1311
FERSA	F 200012
OTHER	35047/DT296209/F566427TR2IH1

OEM Number

74 20 518 617/74 21 021 381/74 21 022 433/74 21
022 434/74 21 024
188/10003570/20518617/20523899/20967830/8510
5692/85111792/

Position

Rear axle

d	D	T	Weight/Kg.
58	110	57.5	3.75

BRAND	BUS	TRUCK	TRAILER
RENAULT		Magnum	
		Premium 2	
VOLVO		FM9	
		FH12	
		FM12	
		FH16	
		FE	
		FH	
		FM12	

Note :- Our Bearings are interchangeable with the O.E.M. All original equipment manufacture's name, number symbols and description used in this page for reference purpose only

KDM CORPORATION INC.

A 89001

KDM



TRUCK HUB UNIT

Cross Reference Number

FAG	805003A.H195/201034
SKF	BTH 0022A/VKBA 5552 BTH 0055/VKBA 5412
TIMKEN	EK50047
FERSA	F 15100
OTHER	571762H/201034/HDS103

OEM Number

9272681/9272778/0003300725/0003500535
0003500935/0149815105/0149819305
0149819905/0169812805/0179815005
149819305/169812805/9433341125/16477

Position

Trailer Axle / Rear Axle

d	D	T	Weight/Kg.
82	140	115	6.45

BRAND	BUS	TRUCK	TRAILER
GIGANT			D - SERIE
			G - SERIE
MERCEDES		ACTROS	
			TE
		ACTROS MP2/3	
			TL
		AXOR	
SCHMITZ CARGOBUL			TZ
		AXOR 2	
			SPR
			SCS
			SKO

Note :- Our Bearings are interchangeable with the O.E.M. All original equipment manufacture's name, number symbols and description used in this page for reference purpose only

KDM CORPORATION INC.

A 89002

KDM



TRUCK HUB UNIT

Cross Reference Number

FAG	201037 / 571762.H195
SKF	BTH 0018A / VKBA 5314
TIMKEN	SET 1231 / NP 078914/SET 1257
FERSA	F 15097
OTHER	BK7700482

OEM Number

1413785/1439070/1443078/ 1476945 /
 1724482/18680871382900/1439070S1/500054527/4
 2537774/42539148/42546141/42556319
 42562731/500054527

Position

Rear axle

d	D	T	Weight/Kg.
68	127	115	5.95

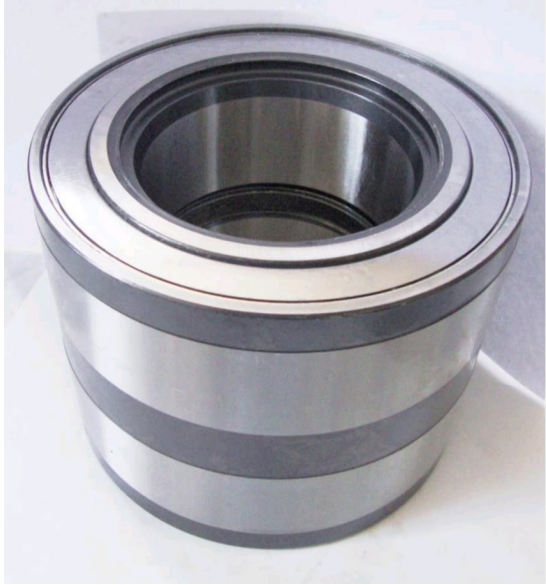
BRAND	BUS	TRUCK	TRAILER
SCANIA		93	
		113	
		114	
		K3	
		K4	
		SERIES 3	
		SERIES 4	
		SERIES 2	

Note :- Our Bearings are interchangeable with the O.E.M. All original equipment manufacture's name, number symbols and description used in this page for reference purpose only

KDM CORPORATION INC.

A 89003

KDM



TRUCK HUB UNIT

Cross Reference Number

FAG	FAG 201059 / 805012.06.H195
SKF	BTH-0025A/BTH-0053/VKBA 5397
TIMKEN	NP 318274-90UA7 / SET 1242 NP 724254
FERSA	F 15122
OTHER	A1228X1480/NP31827490UA4/NP724 25490UA1/02007400A/530191

OEM Number

1905487/2996882/ 7179751/ 7183074 /
7183075/7189050/7189648/1400291
/1408086/7179749/7189648
0809100/A1228X1480/2996882/32000100A

Position

Trailer Axle

d	D	T	Weight/Kg.
90	160	125	10.20

BRAND	BUS	TRUCK	TRAILER
IVECO	EURORIDER	EUROSTAR	
	CITYCLASS	EUROTECH MT	
		STRALIS	
		EUROTECH MP	
		EUROTECH MH	
		EUROCARGO	
DAF		LF55	
		TRIDENT	

Note :- Our Bearings are interchangeable with the O.E.M. All original equipment manufacture's name, number symbols and description used in this page for reference purpose only

KDM CORPORATION INC.

A 89004

KDM



TRUCK HUB UNIT

Cross Reference Number

FAG	805011 C
SKF	VKBA 5409/BTH0054
TIMKEN	SET 1237/NP24058190UA1/SET1277
FERSA	F 15126
OTHER	BK7705011/HDS216

OEM Number

2994058 / 7184079 /
7184080/02007200A/7183074/A1228Q1499

Position

Front axle

d	D	T	Weight/Kg.
82	140	110	6.40

BRAND	BUS	TRUCK	TRAILER
IVECO			
		EUROCARGO	
MERITOR			
			TC
VOLVO			
		FL6	

Note :- Our Bearings are interchangeable with the O.E.M. All original equipment manufacture's name, number symbols and description used in this page for reference purpose only

KDM CORPORATION INC.

A 89005

KDM



TRUCK HUB UNIT

Cross Reference Number

FAG	805092C
SKF	VKBA5415/VKBA5418
TIMKEN	NP79315490UA3/SET1263
FERSA	F 15127
OTHER	360013

OEM Number

7182915 / 81.93420-0336 / 81.93420-0379 /
81.93420-6083 / 81.93420-6099 / 8510
3257/03025400A/03025410A/1104009261S/265264

Position

Rear axle

d	D	T	Weight/Kg.
78	130	90.5	4.35

BRAND	BUS	TRUCK	TRAILER
IVECO		EUROCARGO	
MAN		TGL TGM L 2000	
VOLVO		FL6	

Note :- Our Bearings are interchangeable with the O.E.M. All original equipment manufacture's name, number symbols and description used in this page for reference purpose only

A 89006

KDM



TRUCK HUB UNIT

Cross Reference Number

FAG	803194 A
SKF	VKBA 5415
TIMKEN	SET1262/NP793154-90UA2
FERSA	F 15125
OTHER	DT 465280

OEM Number

013 981 22 05 / 013 981 23 05 / 013 981 98 05/975
330 04 25/3099162/110500247950

Position

Axle

d	D	T	Weight/Kg.
78	130	90	4.36

BRAND	BUS	TRUCK	TRAILER
Mercedes Benz		ATEGO	
		ATEGO 2	
		TOURINO	
VOLVO			
		FL6	

Note :- Our Bearings are interchangeable with the O.E.M. All original equipment manufacture's name, number symbols and description used in this page for reference purpose only

KDM CORPORATION INC.

A 90004

KDM



INSERT UNIT

Cross Reference Number

FAG	803750B
SKF	VKBA5408/BT20130A
TIMKEN	SET1335
FERSA	F 200004
OTHER	SNR-HDS 220/SAMPA 021.151/FEBI BILSTEIN 32711/BERGKRAFT BK7705408

OEM Number

36934200009 / 5031 26457 / 81934200320 /
 81934200342/03025000A/110500905520/81934200
 376/81934206097/81934200320/81934200342/8193
 4200376/81934206097

Position

Rear axle

d	D	T	Weight/Kg.
105	160	140	6.88

BRAND	BUS	TRUCK	TRAILER
MAN	LIONS COACH	L 2000	
	LIONS CITY	M 2000 L	
	HOCL	M 2000 M	
	NG	TGA	
	NL	TGM	
	NÜ	TGS	
	SL	TGX	
BOVA	FUTURA		
	LEXIO		
	MAGIG		
	SINERGY		
MERCEDES	CITARO		
	CINETRO		
VOLVO	7700		
	8500		
	8700		

Note :- Our Bearings are interchangeable with the O.E.M. All original equipment manufacture's name, number symbols and description used in this page for reference purpose only

A 90005

KDM



INSERT UNIT

Cross Reference Number

FAG	804162A
SKF	VKBA 5416
TIMKEN	SET1342
FERSA	F200005
OTHER	BK7700446/DT 3.60004/FEBI 32712/SAMPA 021.153

OEM Number

81.93420-0346

Position

Rear axle

d	D	T	Weight/Kg.
110	170	146	8.55

BRAND	BUS	TRUCK	TRAILER
MAN		TGA	
		TGM	
		TGS	
		F 2000	
		TGX	

Note :- Our Bearings are interchangeable with the O.E.M. All original equipment manufacture's name, number symbols and description used in this page for reference purpose only

KDM CORPORATION INC.

A 90006

KDM



INSERT UNIT

Cross Reference Number

FAG	808918A
SKF	
TIMKEN	
FERSA	
OTHER	SAMPA 075.612/BERGKRAFT BK7700019/AUGER 70671

OEM Number

3434301900

Position

Trailer axle

d	D	T	Weight/Kg.
88	138	120	4.60

BRAND	BUS	TRUCK	TRAILER
SAF			
			Trailer

Note :- Our Bearings are interchangeable with the O.E.M. All original equipment manufacture's name, number symbols and description used in this page for reference purpose only

KDM CORPORATION INC.

A 90007

KDM



INSERT UNIT

Cross Reference Number

FAG	805415A
SKF	-
TIMKEN	-
FERSA	-
OTHER	805415A TVP

OEM Number

3307303000

Position

Rear axle

d	D	T	Weight/Kg.
82	138	110	5.20

BRAND	BUS	TRUCK	TRAILER
SAF			
			Trailer

Note :- Our Bearings are interchangeable with the O.E.M. All original equipment manufacture's name, number symbols and description used in this page for reference purpose only

A 90008

KDM



INSERT UNIT

Cross Reference Number

FAG	805052/805208 /805008
SKF	
TIMKEN	
FERSA	
OTHER	DT 530170/DT 530190/BK7700617

OEM Number

1391617 / 1657637 / 1801594 / 1812161 / 1818004

Position

Rear axle

d	D	T	Weight/Kg.
99.8	148	135	5.30

BRAND	BUS	TRUCK	TRAILER
DAF		85 CF	
		75 CF	
		LF 55	
		XF 95	
		CF 65	
		CF 75	
		CF 85	
		XF 105	

Note :- Our Bearings are interchangeable with the O.E.M. All original equipment manufacture's name, number symbols and description used in this page for reference purpose only

AB 90008

KDM



REPAIR INSERT UNIT

Cross Reference Number

FAG	F-566283.H195
SKF	
TIMKEN	
FERSA	F 200017
OTHER	

OEM Number

1391617 / 1657637 / 1801594 / 1812161 / 1818004

Position

Rear axle

d	D	T	Weight/Kg.
99.8	148	135	6.00

BRAND	BUS	TRUCK	TRAILER
DAF		85 CF	
		75 CF	
		LF 55	
		XF 95	
		CF 65	
		CF 75	
		CF 85	
		XF 105	

Note :- Our Bearings are interchangeable with the O.E.M. All original equipment manufacture's name, number symbols and description used in this page for reference purpose only

AB 90009

KDM



REPAIR INSERT UNIT

Cross Reference Number

FAG	F-566074.H195
SKF	
TIMKEN	
FERSA	F 200016
OTHER	

OEM Number

1691621 / 1801592

Position

Front Wheel

d	D	T	Weight/Kg.
69.8	125	114	4.80

BRAND	BUS	TRUCK	TRAILER
DAF		65CF	
		75CF	
		85CF	
		CF55	
		CF85IV	
		LF55IV	
		XF95	
		XF105	

Note :- Our Bearings are interchangeable with the O.E.M. All original equipment manufacture's name, number symbols and description used in this page for reference purpose only

AB 90010

KDM



REPAIR INSERT UNIT

Cross Reference Number

FAG	F-566834.H195
SKF	
TIMKEN	
FERSA	F 200010
OTHER	805051/805958/70-91615/803628

OEM Number

1388905/1391615/1367346/1801595

Position

Front Wheel

d	D	T	Weight/Kg.
69.8	119.7	110.5	4.36

BRAND	BUS	TRUCK	TRAILER
DAF		85 CF	
		FLF 55	
		FXF 95	
		FCF 65	
		FCF 75	
		FCF 85	
		FXF 10	

Note :- Our Bearings are interchangeable with the O.E.M. All original equipment manufacture's name, number symbols and description used in this page for reference purpose only

A 90011

KDM



INSERT UNIT

Cross Reference Number

FAG	805051
SKF	
TIMKEN	
FERSA	F A200010
OTHER	805051/805958/70-91615/803628

OEM Number

1388905/1391615

Position

Front Wheel

d	D	T	Weight/Kg.
69.8	119.7	110.5	4.30

BRAND	BUS	TRUCK	TRAILER
DAF		85 CF	
		FLF 55	
		FXF 95	
		FCF 65	
		FCF 75	
		FCF 85	
		FXF 10	

Note :- Our Bearings are interchangeable with the O.E.M. All original equipment manufacture's name, number symbols and description used in this page for reference purpose only

KDM CORPORATION INC.

A 90014

KDM



INSERT UNIT

Cross Reference Number

FAG	805958/805923
SKF	
TIMKEN	
FERSA	
OTHER	70-91615

OEM Number

1801592 / 1699327

Position

Front Axle

d	D	T	Weight/Kg.
70	124.7	115	4.50

BRAND	BUS	TRUCK	TRAILER
DAF			
		XF-95	

Note :- Our Bearings are interchangeable with the O.E.M. All original equipment manufacture's name, number symbols and description used in this page for reference purpose only

A 90015

KDM



INSERT UNIT

Cross Reference Number

FAG	800308
SKF	
TIMKEN	
FERSA	
OTHER	

OEM Number

4200101500

Position

d	D	T	Weight/Kg.
120	165	123	

BRAND	BUS	TRUCK	TRAILER
SAF			

Note :- Our Bearings are interchangeable with the O.E.M. All original equipment manufacture's name, number symbols and description used in this page for reference purpose only

AB 90014

KDM



REPAIR INSERT UNIT

Cross Reference Number

FAG	F-566864.H195
SKF	
TIMKEN	
FERSA	
OTHER	

OEM Number

1801592 / 1699327

Position

Front axle

d	D	T	Weight/Kg.
70	124.7	122	

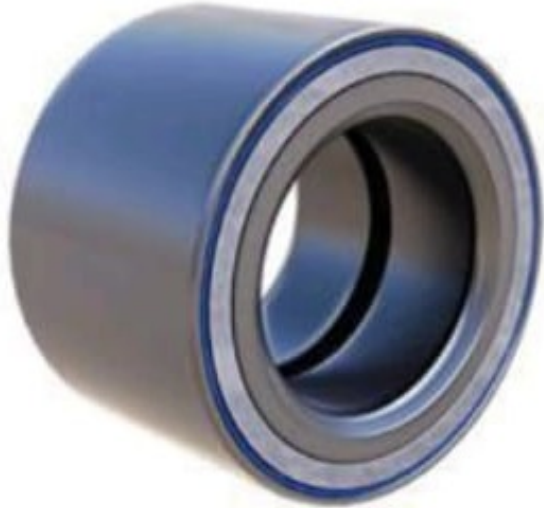
BRAND	BUS	TRUCK	TRAILER
SAF			

Note :- Our Bearings are interchangeable with the O.E.M. All original equipment manufacture's name, number symbols and description used in this page for reference purpose only

KDM CORPORATION INC.

A 89007

KDM



TRUCK HUB UNIT

Cross Reference Number

FAG	713 6908 40
SKF	BTH 1011 / VKBA 3552
TIMKEN	
FERSA	
OTHER	BTH-1011

OEM Number

7180066

Position

Front Wheel

d	D	T	Weight/Kg.
55	90	60	1.45

BRAND	BUS	TRUCK	TRAILER
Iveco		DAILY I	

Note :- Our Bearings are interchangeable with the O.E.M. All original equipment manufacture's name, number symbols and description used in this page for reference purpose only

A 89008

KDM



TRUCK HUB UNIT

Cross Reference Number

FAG	201050
SKF	DU60108-8
TIMKEN	
FERSA	
OTHER	

OEM Number

015 981 19 05

Position

Front Wheel

d	D	T	Weight/Kg.
60	108	75	2.95

BRAND	BUS	TRUCK	TRAILER
Mercedes Benz		ACTROS MP2	
		ATEGO 2	
		AXOR 2	

Note :- Our Bearings are interchangeable with the O.E.M. All original equipment manufacture's name, number symbols and description used in this page for reference purpose only

KDM CORPORATION INC.

A 89009

KDM



TRUCK HUB UNIT

Cross Reference Number

FAG	
SKF	BTH-1024
TIMKEN	
FERSA	
OTHER	BTH-1024

OEM Number

93824579, C369
 93824579
 93824579

Position

Real Wheel

d	D	T	Weight/Kg.
40	73	55	0.98

BRAND	BUS	TRUCK	TRAILER
Iveco		DAILY I	

Note :- Our Bearings are interchangeable with the O.E.M. All original equipment manufacture's name, number symbols and description used in this page for reference purpose only

A 89009

KDM



CAR HUB UNIT

Cross Reference Number

FAG	
SKF	
TIMKEN	
FERSA	
OTHER	46T080805

OEM Number

FW181,RW406
 516006,MB664611,MB664447
 083020801,803020801P,1105070,3844025660,40210
 85000

Position

Real Wheel

d	D	T	Weight/Kg.
40	80	44	1.02

BRAND	BUS	TRUCK	TRAILER
NISSAN			

Note :- Our Bearings are interchangeable with the O.E.M. All original equipment manufacture's name, number symbols and description used in this page for reference purpose only

KDM CORPORATION INC.

A 89010

KDM



CAR HUB UNIT

Cross Reference Number

FAG	
SKF	
TIMKEN	
FERSA	
OTHER	42KWD10

OEM Number

90366-T0044

Position

Real Wheel

d	D	T	Weight/Kg.
42	82	42	1.03

BRAND	BUS	TRUCK	CAR
Toyota			HILUX

Note :- Our Bearings are interchangeable with the O.E.M. All original equipment manufacture's name, number symbols and description used in this page for reference purpose only

AB 90013

KDM



REPAIR INSERT UNIT

Cross Reference Number

FAG	F-566193.H195
SKF	
TIMKEN	
FERSA	
OTHER	520190

OEM Number

1801593
1612331

Position

Front Wheel

d	D	T	Weight/Kg.
82	138	130	6.10

BRAND	BUS	TRUCK	TRAILER
DAF		85 CF	
		XF 95	
		CF 75	
		CF 85	
		XF 105	

Note :- Our Bearings are interchangeable with the O.E.M. All original equipment manufacture's name, number symbols and description used in this page for reference purpose only

KDM CORPORATION INC.

AB 90012

KDM



REPAIR INSERT UNIT

Cross Reference Number

FAG	F-566830.H195
SKF	
TIMKEN	
FERSA	F 200028
OTHER	

OEM Number

3307302400 ; 03434301000 ; 3307300600 ;
 3307301200 ; 3307301500 ; 3307301600 ;
 3307301700 ; 3307302200 ; 3307302501 ;
 3307302600 ; 3307302900 ; 3307303300 ;
 4200101601 ; 04 200 1016 02

Position

Trailer axle

d	D	T	Weight/Kg.
120	175	123	

BRAND	BUS	TRUCK	TRAILER
SAF			SK
			SKRS
			SKRZ
SCHMITZ CARGOBUL			SKI
			SPR
			SCS
			SKO

Note :- Our Bearings are interchangeable with the O.E.M. All original equipment manufacture's name, number symbols and description used in this page for reference purpose only

AB 90011

KDM



REPAIR INSERT UNIT

Cross Reference Number

FAG	F-566847.H195
SKF	
TIMKEN	
FERSA	
OTHER	

OEM Number

04 200 1016 02

Position

Trailer axle

d	D	T	Weight/Kg.
100	148	141	

BRAND	BUS	TRUCK	TRAILER
SAF			SKRLZ
			SKRLS

Note :- Our Bearings are interchangeable with the O.E.M. All original equipment manufacture's name, number symbols and description used in this page for reference purpose only

AB 90007

KDM



REPAIR INSERT UNIT

Cross Reference Number

FAG	F-569868.H195
SKF	
TIMKEN	
FERSA	
OTHER	

OEM Number

04 200 1018 00, 03 307 3030 00, 03 307 3030 01, 03 434 3018 00

Position

Trailer axle

d	D	T	Weight/Kg.
82	138	110	4.70

BRAND	BUS	TRUCK	TRAILER
SAF			SKRB
			SKRLB

Note :- Our Bearings are interchangeable with the O.E.M. All original equipment manufacture's name, number symbols and description used in this page for reference purpose only

AB 90006

KDM



REPAIR INSERT UNIT

Cross Reference Number

FAG	F-570530.H195
SKF	
TIMKEN	
FERSA	
OTHER	

OEM Number

03 200 1020 00, 03 307 3043 00, 03 307 3044 00, 03 307 3045 00, 03 307 3046 00, 03 307 3047 00, 03 307 3048 00, 03 307 3049 00, 03 307 3050 00, 03 307 3051 00, 03 307 3052 00, 03 307 3053 00, 03 307 3054 00, 03 307 3055 00, 03434301900,03434302000,03434302100,03434302200

Position

Trailer axle

d	D	T	Weight/Kg.
88	138	120	5.10

BRAND	BUS	TRUCK	TRAILER
SAF			B
			S
			Z
			Achsgen erlion-06

Note :- Our Bearings are interchangeable with the O.E.M. All original equipment manufacture's name, number symbols and description used in this page for reference purpose only

A 90012

KDM



INSERT UNIT

Cross Reference Number

FAG	803904
SKF	VKBA 5408
TIMKEN	
FERSA	
OTHER	503809

OEM Number

81. 934200342, 3434301200, 4200101602

Position

Front Wheel

d	D	T	Weight/Kg.
120	175	123	6.40

BRAND	BUS	TRUCK	TRAILER
SAF			
			TRAILER

Note :- Our Bearings are interchangeable with the O.E.M. All original equipment manufacture's name, number symbols and description used in this page for reference purpose only

A80004

KDM



TRUCK AXLE MODULE

Cross Reference Number

FAG	201084
SKF	BTF-0056EB / BTF0115 /VKBA 5421
TIMKEN	
FERSA	F 300001 R
Details	Wihout Outer ring hub (INDUSTION)

OEM Number

7185473, 34 111 20523

Position

Front Wheel

d	D	T	Weight/Kg.
82	196	115	11.50

BRAND	BUS	TRUCK	TRAILER
SAF			
			9019-1122
			9019-9022
IVECO			
		EURO CARGO	

Note :- Our Bearings are interchangeable with the O.E.M. All original equipment manufacture's name, number symbols and description used in this page for reference purpose only

KDM CORPORATION INC.

A80010

KDM



TRUCK AXLE MODULE

Cross Reference Number

FAG	201043
SKF	BTF-0045/ VKBA 5420 VKBA 5316
TIMKEN	SET1350
OTHER	F 300003/ HDS001/HUR 040 BK7703970
Details	Without Outer ring hub (INDUSTION)

OEM Number

50 10 439 770 , 5010436014 , 504189654
20764313,

Position

Front Wheel

d	D	T	Weight/Kg.
70	195	110	

BRAND	BUS	TRUCK	TRAILER
RENAULT		PREMIUM	
		MAGNUM	
		KERAX	
		MIDLUM	

Note :- Our Bearings are interchangeable with the O.E.M. All original equipment manufacture's name, number symbols and description used in this page for reference purpose only

A80005

KDM



TRUCK AXLE MODULE

Cross Reference Number

FAG	201043
SKF	BTF-0045/ VKBA 5420 VKBA 5316
TIMKEN	SET1350
OTHER	F 300003/ HDS001/HUR 040/
Details	Without Outer ring hub (INDUSTION)

OEM Number

50 10 439 770 , 5010436014 , 504189654
20764313,

Position

Front Wheel

d	D	T	Weight/Kg.
70	195	110	

BRAND	BUS	TRUCK	TRAILER
RENAULT		PREMIUM	
		MAGNUM	
		KERAX	
		MIDLUM	

Note :- Our Bearings are interchangeable with the O.E.M. All original equipment manufacture's name, number symbols and description used in this page for reference purpose only

A80006

KDM



TRUCK AXLE UNIT

Cross Reference Number

FAG	201042
SKF	VKBA5407
TIMKEN	
OTHER	F 300002/ SNR HDS 002 NTN HUB 056-3/ FEBI-34105
Details	Without Outer ring hub (INDUSTION)

OEM Number

5010566154/5010566154A

Position

Front Wheel

d	D	T	Weight/Kg.
50	140	95	5.60

BRAND	BUS	TRUCK	TRAILER
RENAULT		MAGNUM	
		MIDLUM	

Note :- Our Bearings are interchangeable with the O.E.M. All original equipment manufacture's name, number symbols and description used in this page for reference purpose only

A80014

KDM



TRUCK AXLE UNIT

Cross Reference Number

FAG	201044
SKF	VKBA5308/SKF BTF0034/VKBA 5428
TIMKEN	SET1340/EK50042
OTHER	HDS005
Details	

OEM Number

5010216920/ 7420879770

Position

d	D	T	Weight/Kg.
65	194	113	11.30

BRAND	BUS	TRUCK	TRAILER
RENAULT		KERAX	
		MAGNUM	
		MAJOR	
		MAXTER	
		MIDLINER	
		PREMIUM	
		PREMIUM 2	
		R...	

Note :- Our Bearings are interchangeable with the O.E.M. All original equipment manufacture's name, number symbols and description used in this page for reference purpose only

A80007

KDM



TRUCK AXLE UNIT

Cross Reference Number

FAG	N.A
SKF	N.A
TIMKEN	N.A
OTHER	N.A
Details	DU-60108-8 Bearing With Hub

OEM Number

015 981 1905

Position

AXLE

d	D	T	Weight/Kg.
60	146	115.1	8.40 KG

BRAND	BUS	TRUCK	TRAILER
MERCEDES BENZ		ACTROS	
		AXOR	

Note :- Our Bearings are interchangeable with the O.E.M. All original equipment manufacture's name, number symbols and description used in this page for reference purpose only

A80011

KDM



TRUCK AXLE UNIT

Cross Reference Number

FAG	201082/ BTF 0074
SKF	VKBA 5411
TIMKEN	SET1337
OTHER	BK7705411 , 27790, 030.251-00A
Details	New design without outer hub

OEM Number

81.93420.0337

Position

AXLE

d	D	T	Weight/Kg.
55	145	95/100	6.10

BRAND	BUS	TRUCK	TRAILER
MAN		L 2000	
		M 2000 L	
		TGL	
		TGM	

Note :- Our Bearings are interchangeable with the O.E.M. All original equipment manufacture's name, number symbols and description used in this page for reference purpose only

A80009

KDM



TRUCK AXLE UNIT

Cross Reference Number

FAG	N.A
SKF	VKBA 3553 BTFB328755D
TIMKEN	SET1322
OTHER	681924, 4015, R14015, 27226, 732502, 7.32502
Details	

OEM Number

713 6908 50
9381 0034,93824579/93824580

Position

Front Wheel

d	D	T	Weight/Kg.
45	120	85	4.14

BRAND	BUS	TRUCK	TRAILER
IVECO		DAILY II /Estate	
		DAILY II /Dumptruck	
		DAILY II /Flatbed	
DAF			

Note :- Our Bearings are interchangeable with the O.E.M. All original equipment manufacture's name, number symbols and description used in this page for reference purpose only

A80012

KDM



TRUCK AXLE UNIT

Cross Reference Number

FAG	N.A
SKF	N.A
TIMKEN	N.A
OTHER	BTH-0022 HUB, 75624, 4.67806 4.67810, 202.209, 202.152
Details	CASTING HUB

OEM Number

9433300825, MRHB0012, 9433301125, 9433340701,
0003300725, 9433301225, MRHB0008

Position

Rear axle

d	D	T	Weight/Kg.
140	199	147.5	

BRAND	BUS	TRUCK	TRAILER
Mercedes			TE
		ACTROS	
		ACTROS MP2/3	TL
			TZ
		AXOR	
		AXOR 2	

Note :- Our Bearings are interchangeable with the O.E.M. All original equipment manufacture's name, number symbols and description used in this page for reference purpose only

A80012

KDM



TRUCK AXLE UNIT

Cross Reference Number

FAG	N.A
SKF	N.A
TIMKEN	N.A
OTHER	DT-464657, SAMPA 202.208 BK6100341, 803194A HUB
Details	CASTING HUB

OEM Number

975 330 08 25
975 330 04 25

Position

Rear axle

d	D	T	Weight/Kg.
79	168	140	

BRAND	BUS	TRUCK	TRAILER
IVECO			
		EURO CARGO	
MAN		TGL	
		TGM	
MERCEDES		ATEGO-I	
		ATEGO-II	
VOLVO			

Note :- Our Bearings are interchangeable with the O.E.M. All original equipment manufacture's name, number symbols and description used in this page for reference purpose only